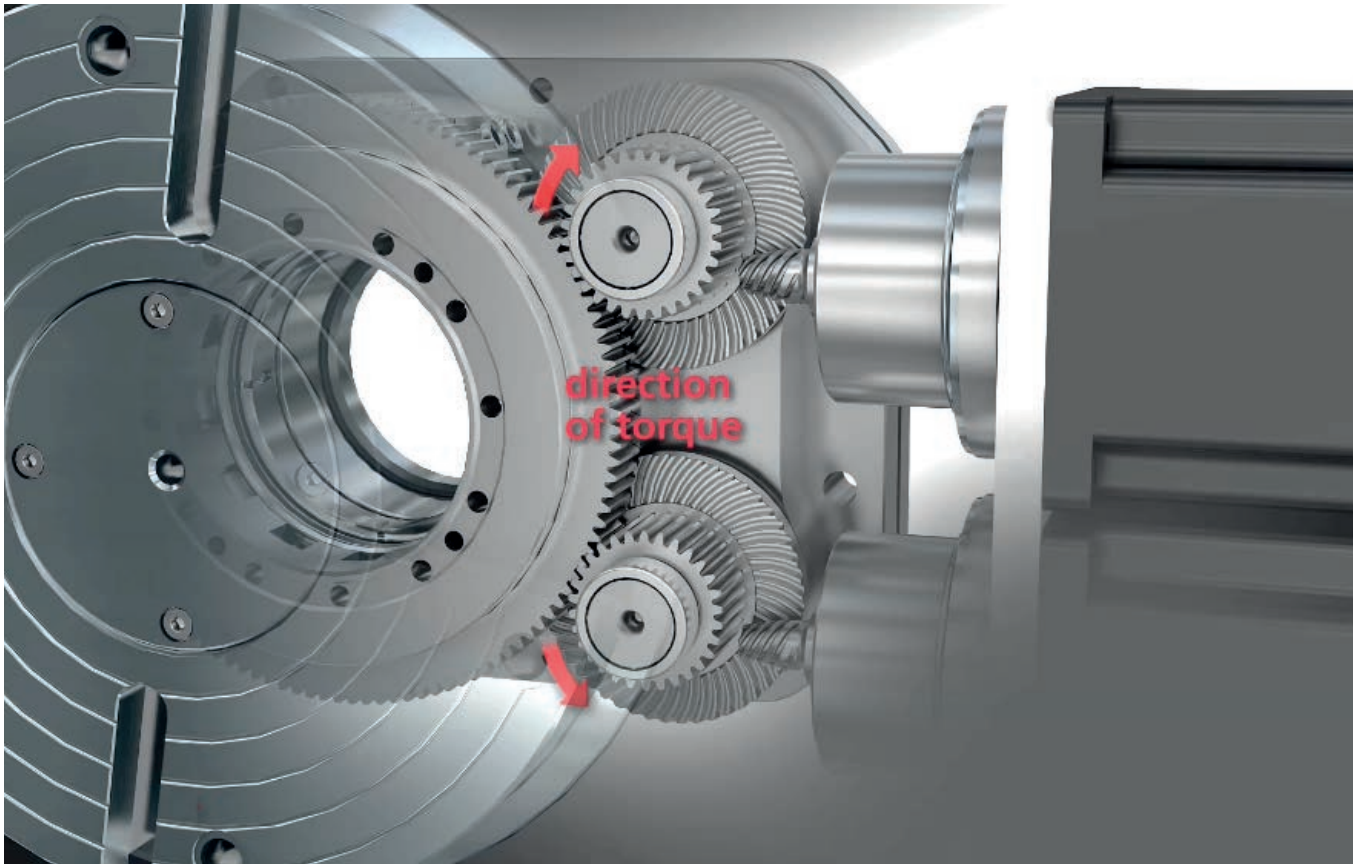


EPPINGER CNC Rotary Tables

EPPINGER 
PRECISION GEAR SOLUTIONS

EPPINGER CNC ROTARY TABLES



ZERO BACKLASH DUAL DRIVE TRAIN

- Pre-loading algorithm* holds Work piece in place even without Clamping
- Clamp-less operation shortens Indexing time
- Low friction
- Low wear out

INTEGRATED ANGULAR MEASUREMENT SYSTEM

- Directly mounted on the table axis
- Two reader heads for high positioning accuracy
- High positioning accuracy, independent of gear train wear out
- Positioning control via angular Sensor ensures position even under load fluctuations

* Pre-loading and position control algorithm (Patent pending)



MULTI DISC CLAMPING

- High torsional stiffness due to large clamping diameter
- Clamping mechanism immediately attached to face plate
- High clamping torque with hydraulic principle and pneumatic actuation by pressurized air

HIGH PRECISION BEARINGS

- High precision pre-loaded axial-radial bearing
- Pre-loaded counter bearing

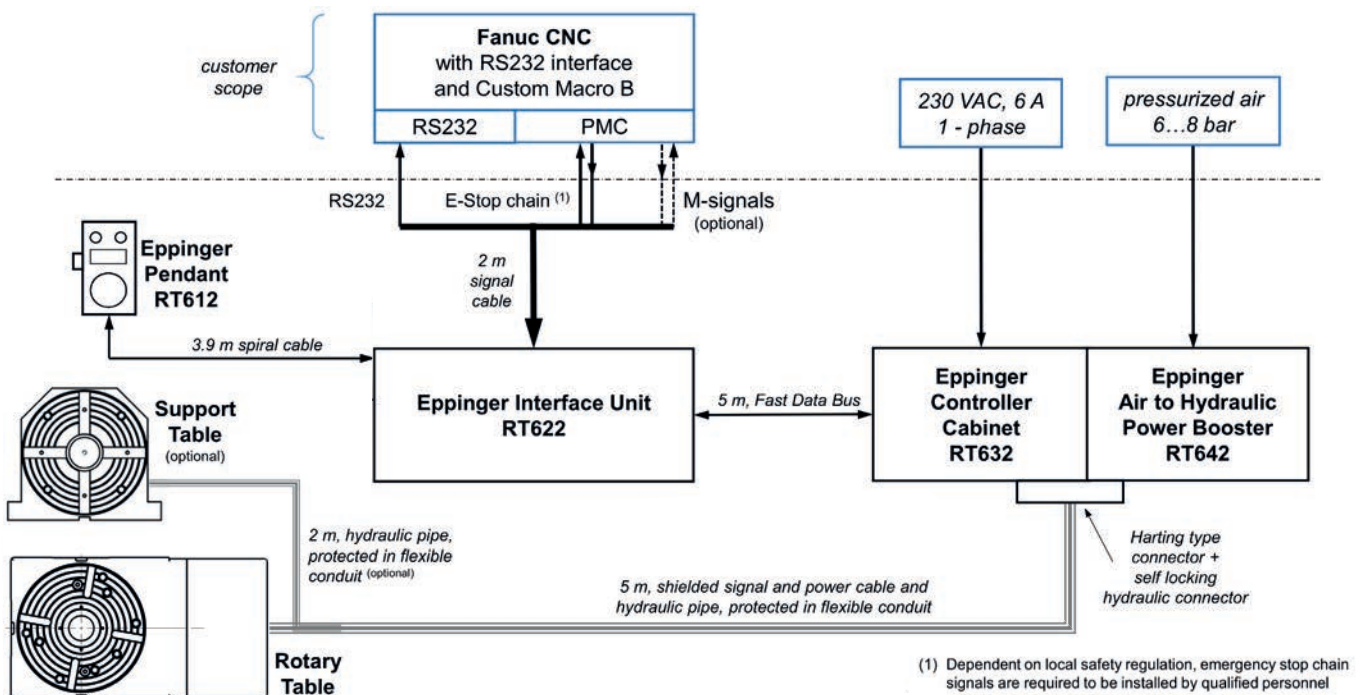


HAND HELD UNIT

- Allows for manual fine movement of the rotary table with different feed rates
- Displays current rotary table position as well as status
- Provides interface for manual programming
- Suitable for two axis control

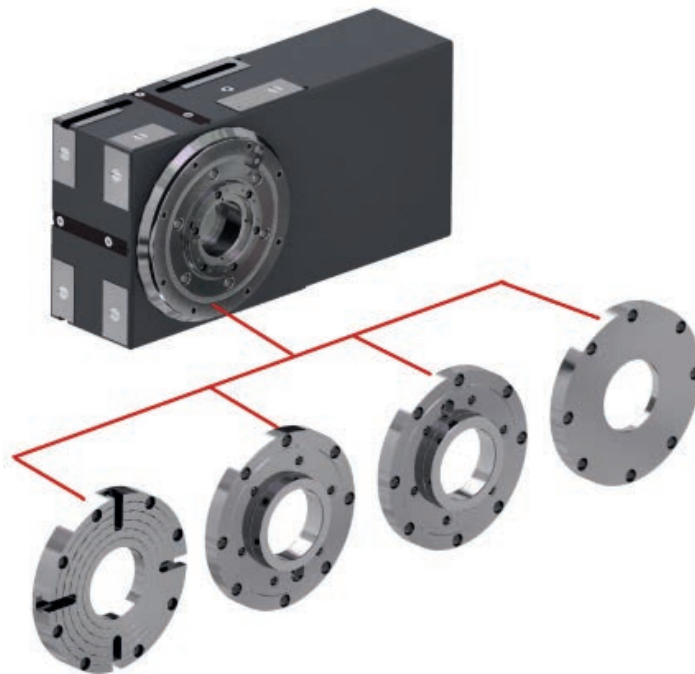


SCHEMATIC INSTALLATION DIAGRAM



CNC ROTARY TABLES

- Short taper confirming to Industry standard ISO 702-1
- Faceplates suitable for Hainbuch, Lang, Erowa, System 3R and Roehm chucks etc.



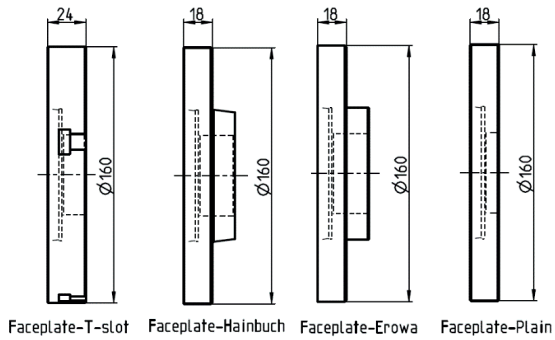
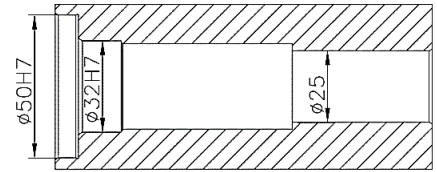
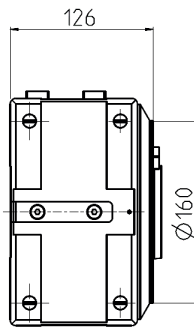
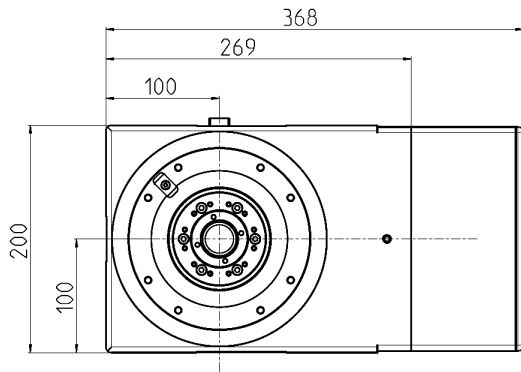
SPECIFICATIONS

Model Number		ETS160
Diameter of Table	mm	160
Diameter of Spindle Hole	mm	25thru, 32 H7
Centre Height	mm	100
Width of T-Slot	mm	10 H7
Clamping System		Air Hyd.
Clamping Torque	Nm	200 400
Indexing Accuracy	arcsec	±10
Repeatability	arcsec	±4
Internal Signal Resolution		< 0.0002°
Rotation Speed	min ⁻¹	20
Total Reduction Ratio		60:1
Net Weight	kg	54
Maximum Work Intertia	kg m ²	1.0
Driving Torque	Nm	72

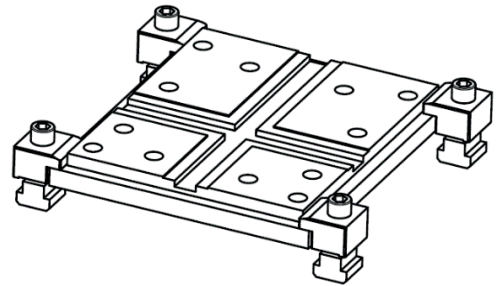
Rotary tables can be mounted on 4 faces (horizontally or vertically) depending on the application. Specifications are subject to change

OVERALL DIMENSIONS

ETS160



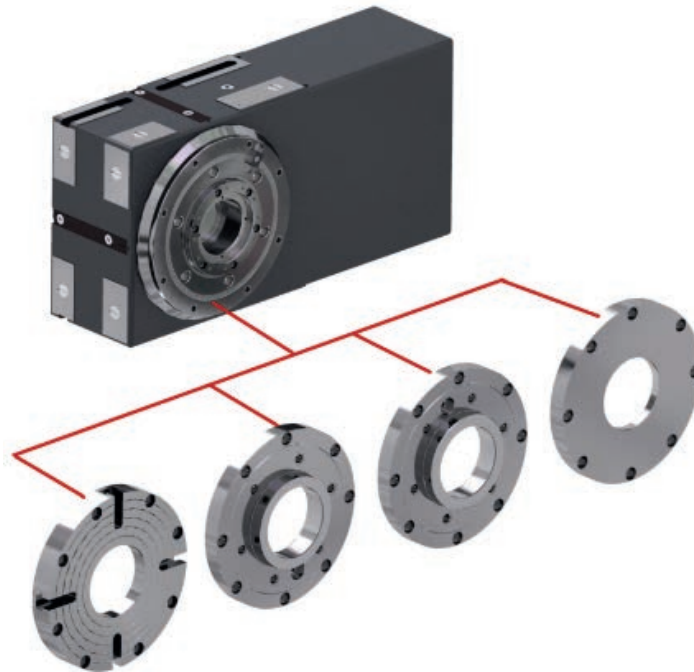
Faceplate-T-slot Faceplate-Hainbuch Faceplate-Erowa Faceplate-Plain



Base plate (20 mm thick)

CNC ROTARY TABLES

- Short taper confirming to Industry standard ISO 702-1
- Faceplates suitable for Hainbuch, Lang, Erowa, System 3R and Roehm chucks etc.



SPECIFICATIONS

Model Number		ETS200	ETS200-ULTRA	ETS200-ECO
Diameter of Table	mm	200	200	200
Diameter of the Spindle Hole	mm	45thru, 60 H7	40thru, 60 H7	90 H7 thru
Centre Height	mm	115	115	115
Width of T-Slot	mm	12 H7	12 H7	12 H7
Clamping System		Air Hyd.	Electrically	Electrically
Clamping Torque	Nm	300 550*	90	90
Indexing Accuracy	arcsec	±5	±5	±15
Repeatability	arcsec	±2	±2	±7
Internal Signal Resolution		< 0.0001°	< 0.0001°	< 0.001°
Rotation Speed	min ⁻¹	25	20	20
Total Reduction Ratio		40:1	60:1	60:1
Net Weight	kg	70	55	50
Maximum Work Inertia	kg m ²	2	1	1
Driving Torque	Nm	120	72	72

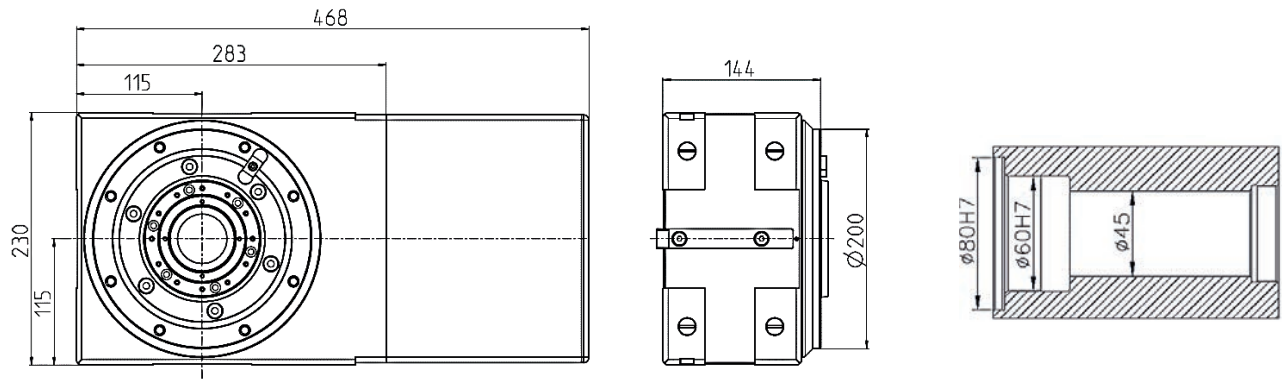
Rotary tables can be mounted on 4 faces (horizontally or vertically) depending on the application.

Specifications are subject to change

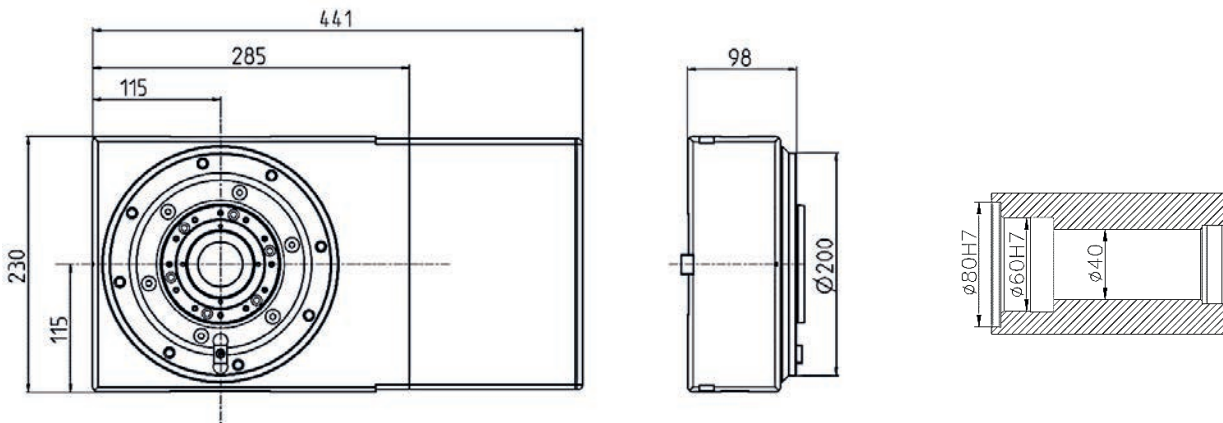
*: Higher clamping torque possible on request

OVER ALL DIMENSIONS

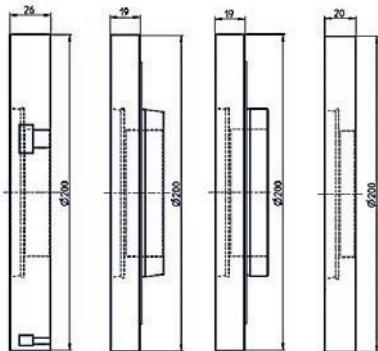
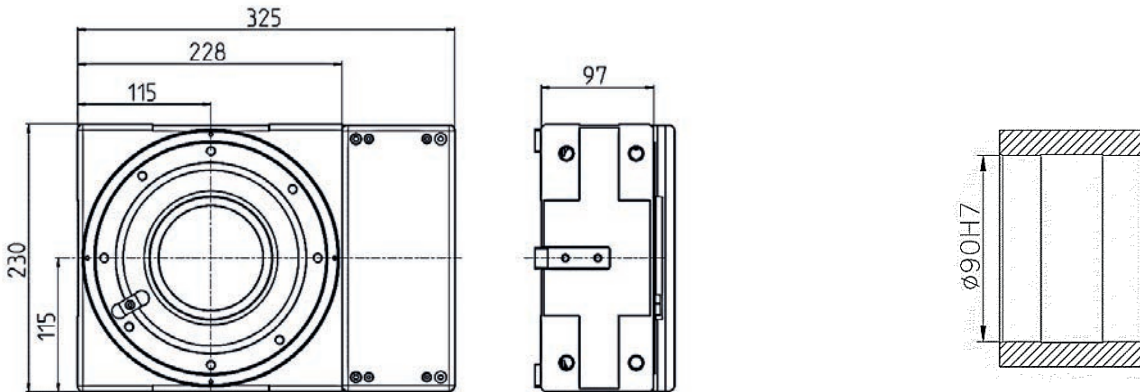
ETS200



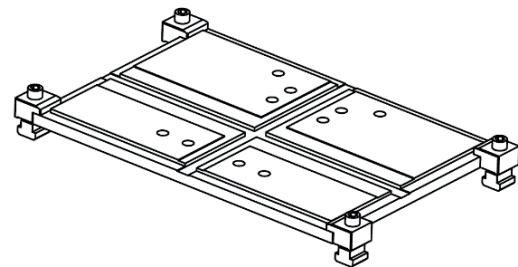
ETS200-ULTRA



ETS200-ECO



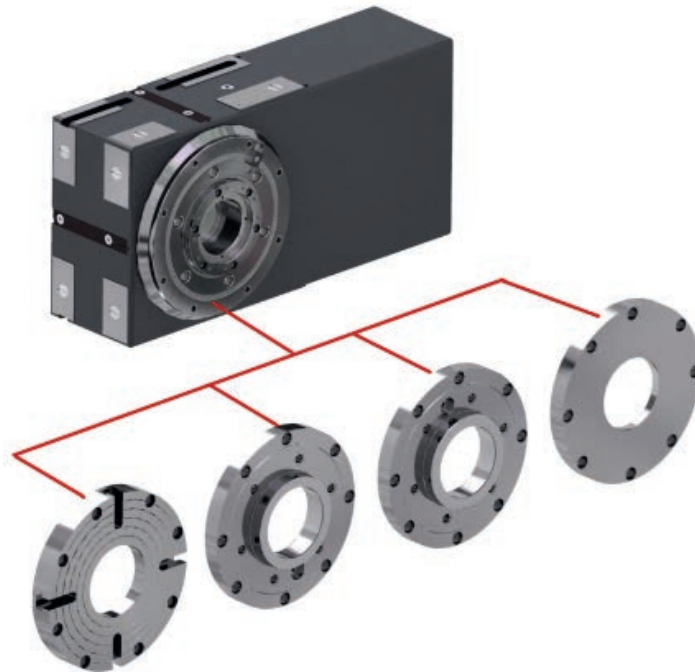
Faceplate-T-slot Faceplate-Hairbuch Faceplate-Erowa Faceplate-Plain



Base plate (20 mm thick)

CNC ROTARY TABLES

- Short taper confirming to Industry standard ISO 702-1
- Faceplates suitable for Hainbuch, Lang, Erowa, System 3R and Roehm chucks etc.

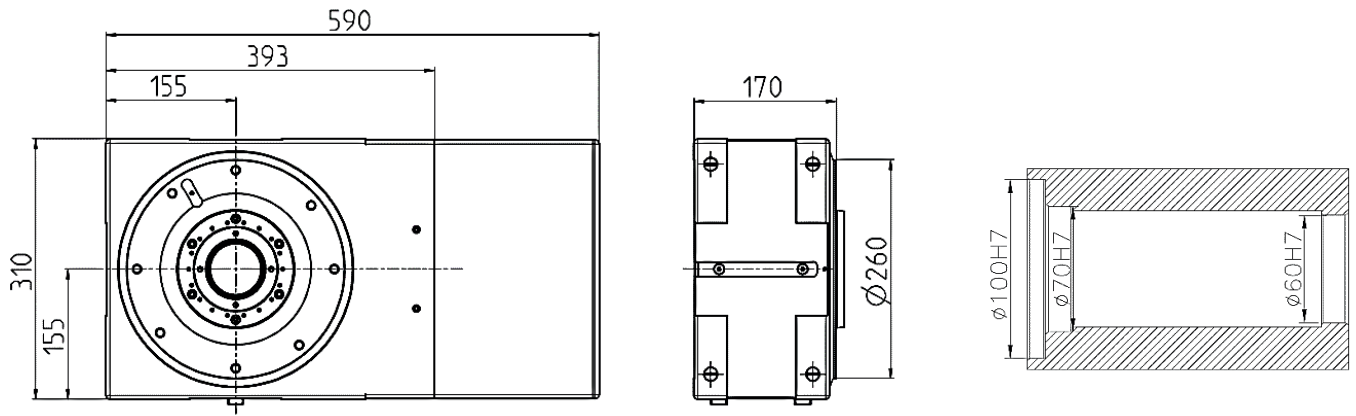


Model Number		ETS260		ETS320	
Diameter of Table	mm	260		320	
Diameter of Spindle Hole	mm	60 thru, 100 H7		80 thru, 120 H7	
Centre Height	mm	155		175	
Width of T-Slot	mm	12 H7		12 H7	
Clamping System		Air	Hyd.	Air	Hyd.
Clamping Torque	Nm	400	1600	700	2700
Indexing Accuracy	arcsec	±3		±3	
Repeatability	arcsec	±1		±1	
Internal Signal Resolution		< 0.0001°		< 0.0001°	
Rotation Speed	min ⁻¹	22		22	
Total Reduction Ratio		40:1		40:1	
Net Weight	kg	200		250	
Maximum Work Inertia	kg m ²	8		8	
Driving Torque	Nm	600		600	

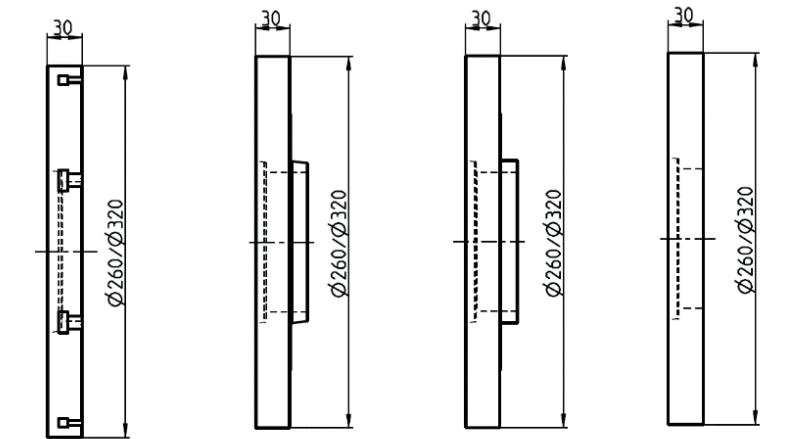
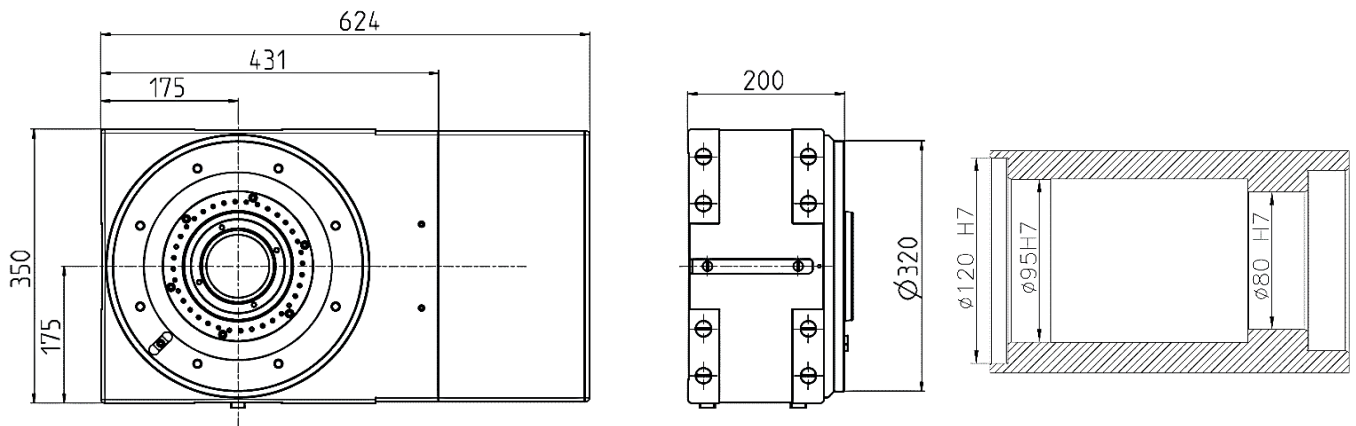
Rotary tables can be mounted on 4 faces (horizontally or vertically) depending on the application
Specifications are subject to change

OVERALL DIMENSIONS

ETS260



ETS320

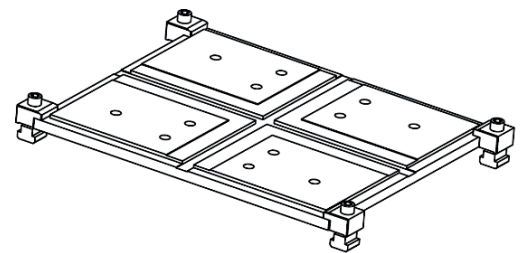


Faceplate-T-slot

Faceplate-Hainbuch

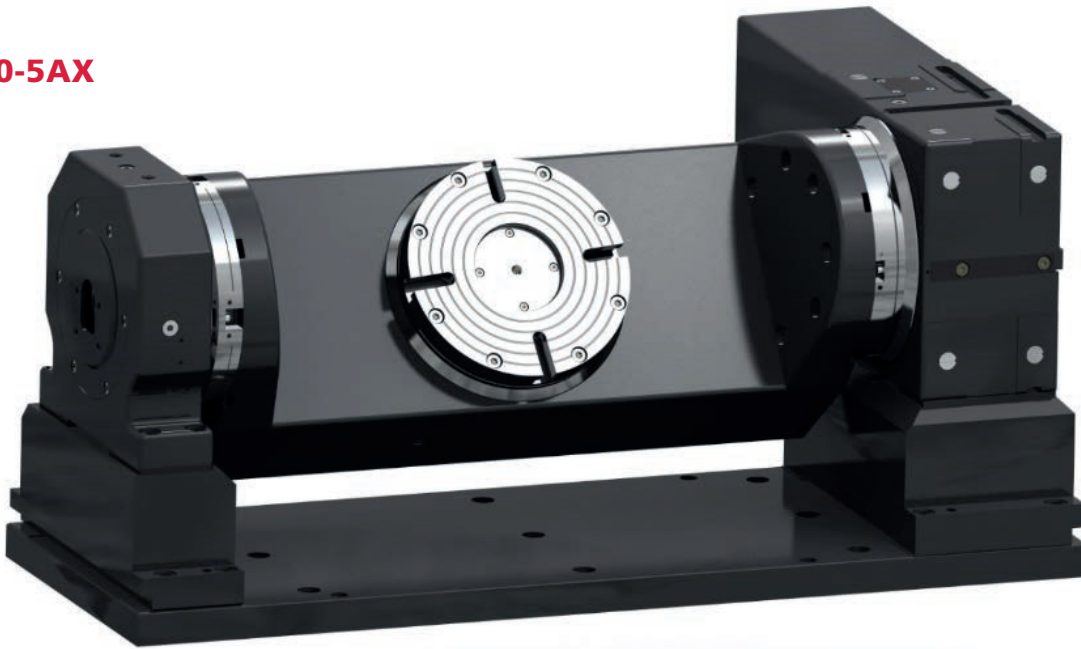
Faceplate-Erowa

Faceplate-Plain



Base plate (25 mm thick)

ETS200-5AX



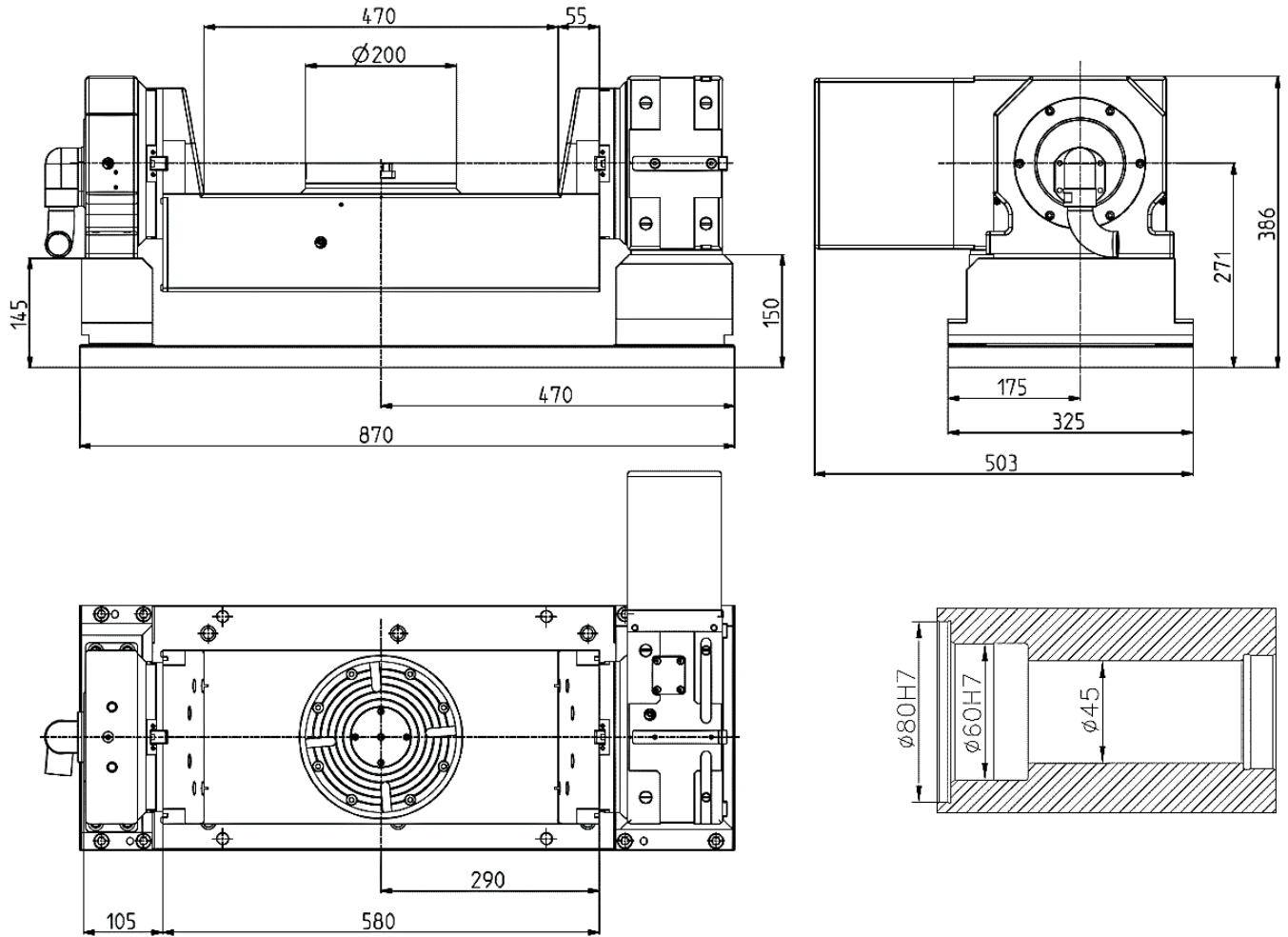
SPECIFICATIONS

Item		ETS200-5AX		ETS260-5AX		ETS320-5AX	
Diameter of Table	mm	200		260		320	
Diameter of Spindle Hole	mm	80 H7		100 H7		120 H7	
Centre Height	mm	271		345		385	
Width of T-Slot	mm	12 H7		12 H7		12 H7	
Axis		Rotary	Tilting	Rotary	Tilting	Rotary	Tilting
Clamping System		Air/Hyd.	Hyd.	Air/Hyd.	Hyd.	Air/Hyd.	Hyd.
Clamping Torque	Nm	300/550	1100	400/1600	3000	700/2700	4500
Int. Signal Resolution		< 0.0001°		< 0.0001°		< 0.0001°	
Rotation Speed	rpm	25	16	22	12	22	12
Indexing Accuracy	arcsec	±5	±10	±3	±10	±3	±10
Repeatability	arcsec	±2	±5	±1	±5	±1	±5
Driving Torque	Nm	120		600		600	
Net Weight	kg	360		870		1050	
Max. Work Load	0° to 30° kg	90		240		240	
	0° to 90° kg	60		160		160	

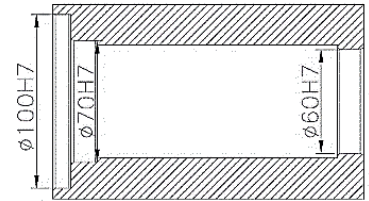
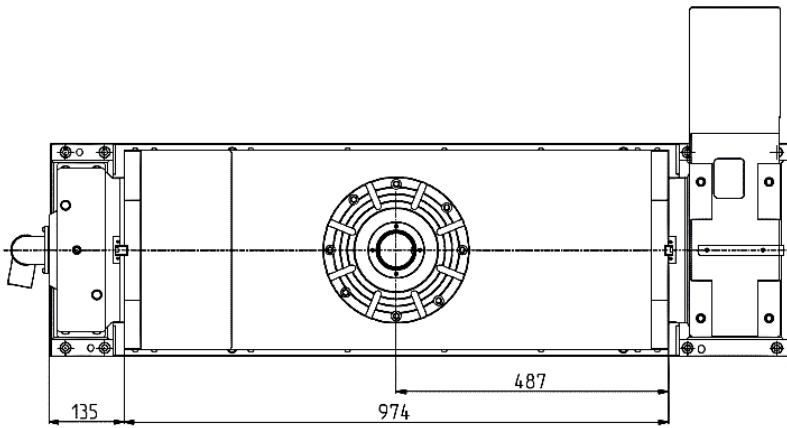
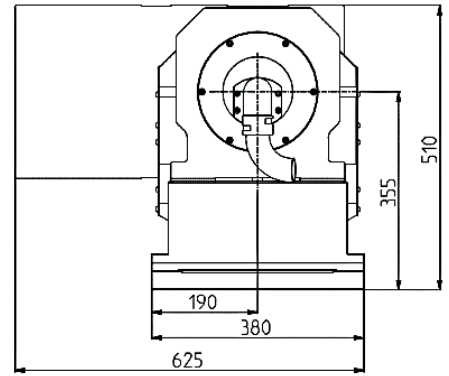
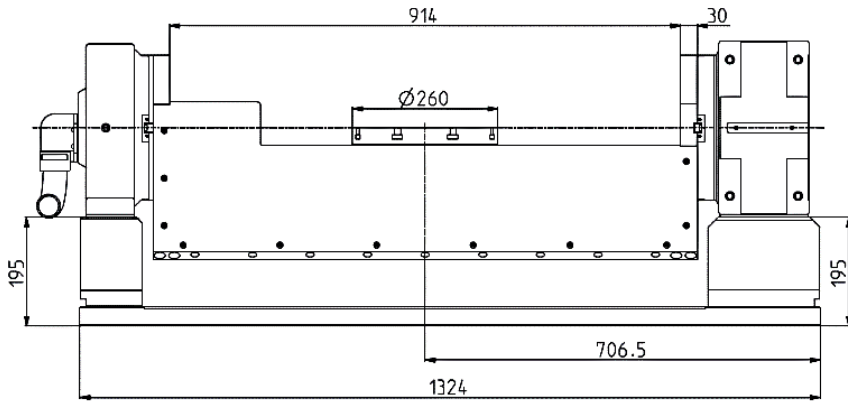
Specifications are subject to change

OVERALL DIMENSIONS

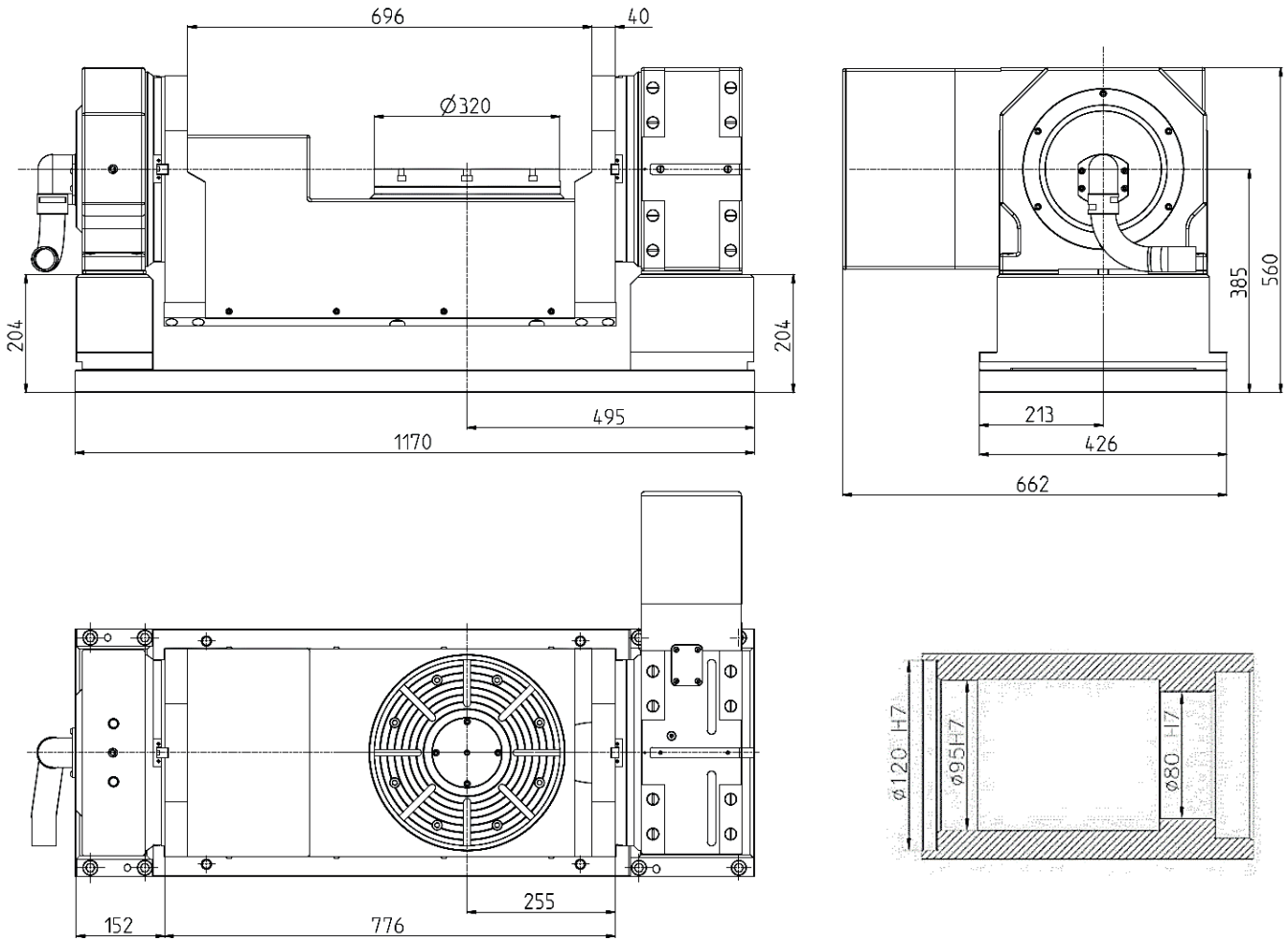
ETS200-5AX



ETS260-5AX

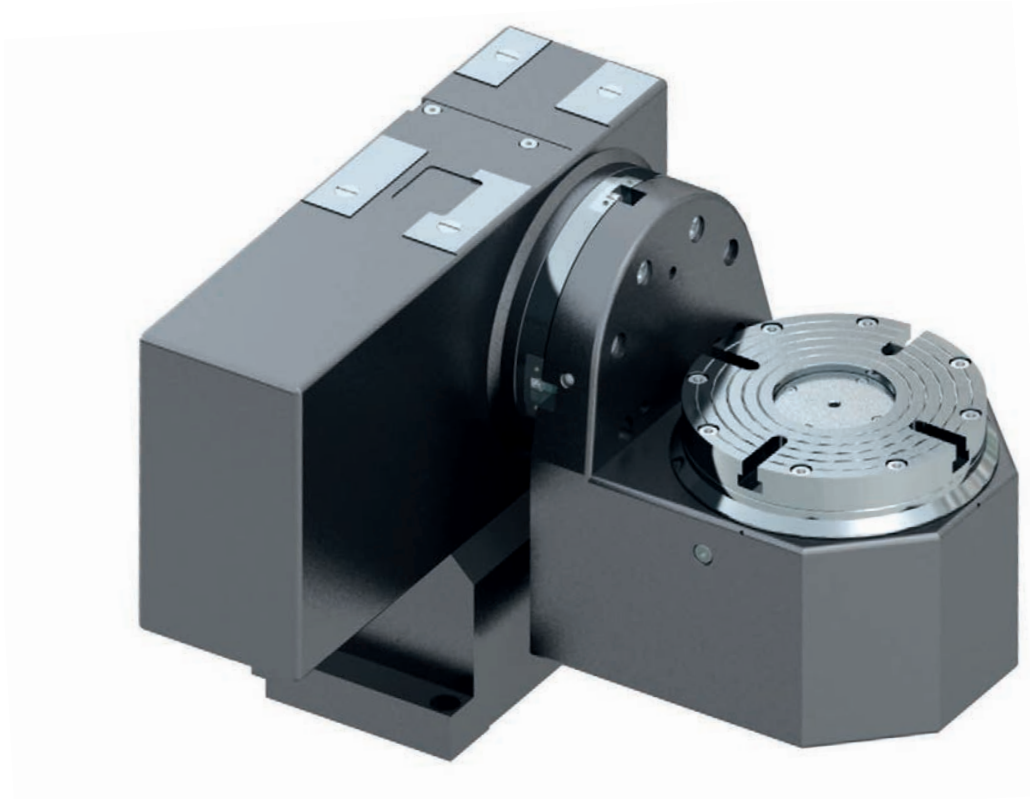


ETS320-5AX



ETS200-DUAL

Direct Drive rotary-axis combined with strong tilting axis. L-shape to allow for pick and place automation from the side.

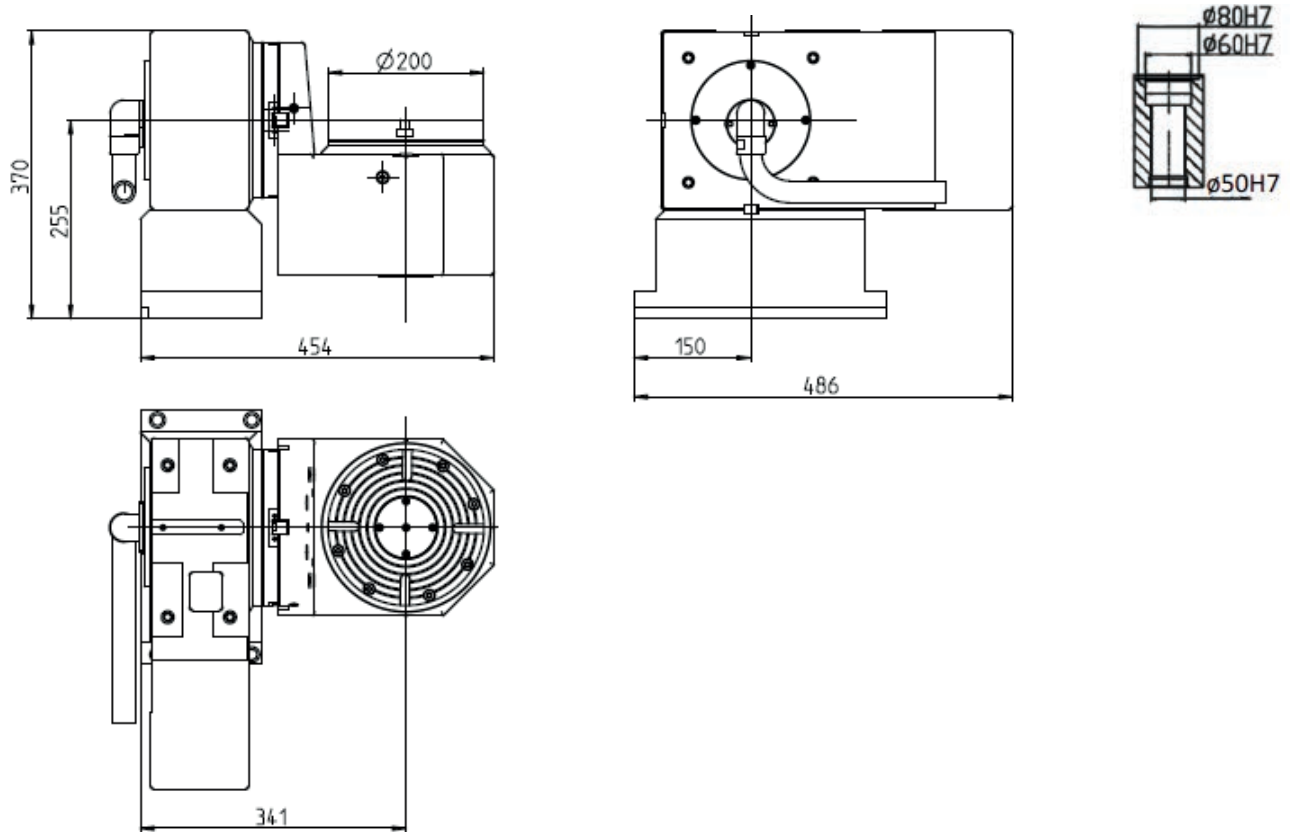


SPECIFICATIONS

MODEL NUMBER		ETS200-DUAL	
Diameter of Table	mm	200	
Diameter of Spindle Hole	mm	45 thru, 60H7	
Width of T-Slot	mm	12H7	
Axis		Tilting	Rotary
Clamping System		Hyd.	Air/Hyd.
Clamping Torque	Nm	550	300/550
Rotation Speed	rpm	25	200
Indexing Accuracy	arcsec	±10	±5
Repeatability	arcsec	±5	±2
Driving Torque	Nm	120	Continuous torque – 20 Nm Peak torque – 60 Nm
Total Reduction Ratio		40:1	direct drive
Tilting Angle	deg	+110 -110	unlimited
Net Weight	kg	200	
Int. Signal Resolution		<0.0001°	
Max. Work Load	0° to 30°	kg	45
	0° to 90°	kg	30

Specifications are subject to change

OVERALL DIMENSIONS





EGT Eppinger Getriebe Technologie GmbH, Breitwiesenweg 2-8, 73770 Denkendorf, Germany.
Phone: +49 711 934 934-0, Fax: +49 711 934 934-1, E-Mail: info-egt@eppinger-gears.com